



MANAGING UNDER/OVERSUBSCRIPTION IN ERA-NET CALLS

GEH MasterClass on Best Practices for Call Mechanisms

30/11/2023

BASICS

- › Process described in this presentation relates to internal arrangement (~~Grant Agreement~~) -> fine-tuned by funders first in MoU and during implementation
- › Ease understanding -> examples provided in this presentation have been simplified (only 3 funders, round amounts in m€)

OVERSUBSCRIPTION FACTOR (OSF)

Background

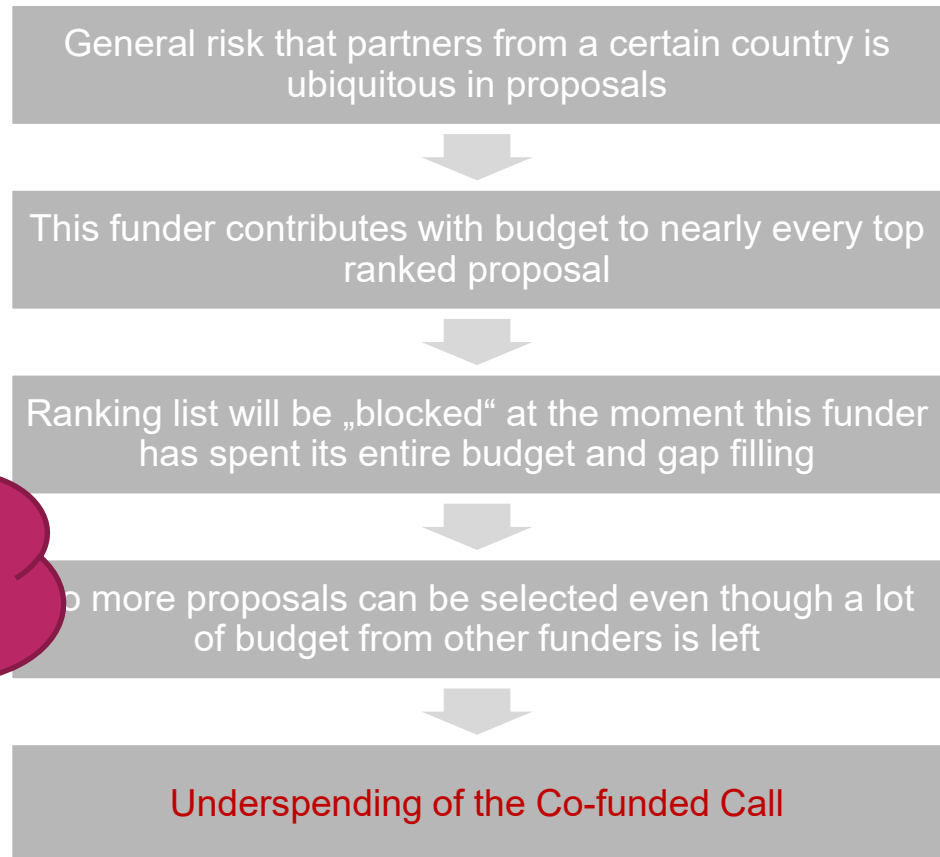
- > HEU regulations says that for selection of proposals the ranking list needs to be respected
- > Risk that a funder „blocks“ ranking list
- > + avoid that 1 funder gets „too much“ of the EC contribution



OVERSUBSCRIPTION FACTOR (OSF)

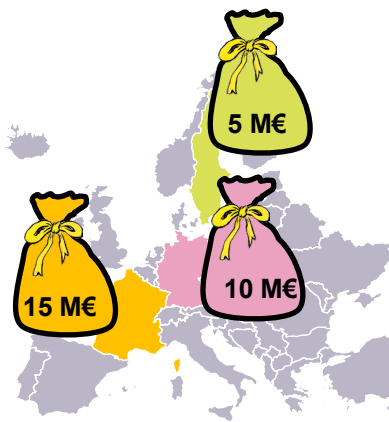
Background

- > HEU regulations says that for selection of proposals the ranking list needs to be respected
- > Risk that a funder „blocks“ ranking list



OVERSUBSCRIPTION FACTOR (OSF)

- › OSF= Requested Funding from all applicants per funder / Initial budget of this funder (Without Top-Up!)
- › Max. OSF is defined in MoU
- › Applied during selection of pre-proposals
- › Example: 10 Pre-Proposals submitted; agreed OSF = 3

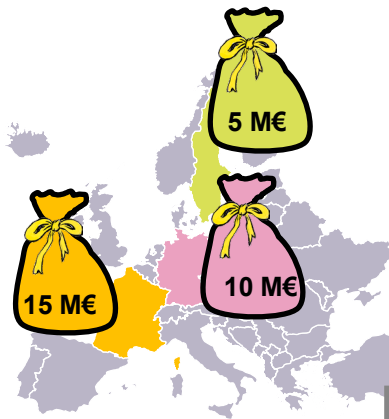


Item	Funder 1	Funder 2	Funder 3
Initial budget	15 M€	10 M€	5 M€
Requested Funding all pre-proposals	65 M€	39 M€	23 M€
OSF	$65 \text{ M€} / 15 \text{ M€} =$ 4.33	$39 \text{ M€} / 10 \text{ M€} =$ 3.9	$23 \text{ M€} / 5 \text{ M€} =$ 4.6

Encourage funder to enhance budget!

OVERSUBSCRIPTION FACTOR (OSF)

- › OSF= Requested Funding from all applicants per funder / Initial budget of this funder (Without Top-Up!)
- › Max. OSF is defined in MoU
- › Applied during selection of pre-proposals
- › Example: 10 Pre-Proposals submitted; agreed OSF = 3



Item	Funder 1	Funder 2	Funder 3
Initial budget	15 M€	10 M€	5 M€
Requested Funding all pre-proposals	65 M€	39 M€	23 M€
OSF	$65 \text{ M€} / 15 \text{ M€} =$ 4.33	$39 \text{ M€} / 10 \text{ M€} =$ 3.9	$23 \text{ M€} / 5 \text{ M€} =$ 4.6

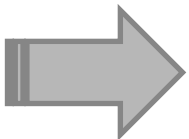
Smart selection of pre-proposals based on ranking list to reduce the OSF of all funders to max. 3

OSF: CALCULATION ALONG RANKED PP

Ranked PP	Funder 1 15 M€	OSF
Superfarm	9 M€	$9 \text{ M€} / 15 \text{ M€} = 0,6$
WonderAGRI	9 M€	$(9 \text{ M€} + 9 \text{ M€}) / 15 \text{ M€} = 1,2$
FERTIL	6 M€	$(9 \text{ M€} + 9 \text{ M€} + 6 \text{ M€}) / 15 \text{ M€} = 1,6$
....		

OSF: CALCULATION ALONG RANKED PP

Ranked PP	Funder 1 15 M€	OSF
Superfarm	9 M€	$9 \text{ M€} / 15 \text{ M€} = 0,6$
WonderAGRI	9 M€	$(9 \text{ M€} + 9 \text{ M€}) / 15 \text{ M€} = 1,2$
FERTIL	6 M€	$(9 \text{ M€} + 9 \text{ M€} + 6 \text{ M€}) / 15 \text{ M€} = 1,6$
....		



Requested Funding will be added up from top to down and sum divided by initial budget → increased OSF the more PP are included

OSF: EXAMPLE (MAX. OSF=3)

Ranked PP	Funder 1 15 M€	OSF	Funder 2 10 M€	OSF	Funder 3 5 M€	OSF
Superfarm	9 M€	0,6	5 M€	0,5	3 M€	0,6
WonderAGRI	9 M€	1,2	5 M€	1,0	1 M€	0,8
FERTIL	6 M€	1,6	2 M€	1,2	2 M€	1,2
BoostAg	10 M€	2,27	2 M€	1,4	2 M€	1,6
AgMagna	15 M€	3,26	2 M€	1,6	2 M€	2,0
VolvBay						
BIEN						
AVENGe						
CafeClim						
Anyway						

Check if Funder 1
 can enhance
 budget

OSF: EXAMPLE (MAX. OSF=3)

Ranked PP	Funder 1 15 M€	OSF	Funder 2 10 M€	OSF	Funder 3 5 M€	OSF
Superfarm	9 M€	0,6	5 M€	0,5	3 M€	0,6
WonderAGRI	9 M€	1,2	5 M€	1,0	1 M€	0,8
FERTIL	6 M€	1,6	2 M€	1,2	2 M€	1,2
BoostAg	10 M€	2,27	2 M€	1,4	2 M€	1,6
AgMagna	15 M€	3,26	2 M€	1,6	2 M€	2,0
VolvBay						
BIEN						
AVENGe						
CafeClim						
Anyway						

Another funder from
 same country could
 take this project?

OSF: EXAMPLE (MAX. OSF=3)

Ranked PP	Funder 1 15 M€	OSF	Funder 2 10 M€	OSF	Funder 3 5 M€	OSF
Superfarm	9 M€	0,6	5 M€	0,5	3 M€	0,6
WonderAGRI	9 M€	1,2	5 M€	1,0	1 M€	0,8
FERTIL	6 M€	1,6	2 M€	1,2	2 M€	1,2
BoostAg	10 M€	2,27	2 M€	1,4	2 M€	1,6
AgMagna	15 M€	3,26	2 M€	1,6	2 M€	2,0
VolvBay						
BIEN						
AVENGe						
CafeClim						
Anyway						

Possible to „reduce“
 slightly (e.g.
 5%) requested funding in
 a/some/all proposals?

OSF: EXAMPLE (MAX. OSF=3)

Ranked PP	Funder 1 15 M€	OSF	Funder 2 10 M€	OSF	Funder 3 5 M€	OSF
Superfarm	9 M€	0,6	5 M€	0,5	3 M€	0,6
WonderAGRI	9 M€	1,2	5 M€	1,0	1 M€	0,8
FERTIL	6 M€	1,6	2 M€	1,2	2 M€	1,2
BoostAg	10 M€	2,27	2 M€	1,4	2 M€	1,6
AgMagna	15 M€	3,26	2 M€	1,6	2 M€	2,0
VolvBay						
BIEN						
AVENGe						
CafeClim						
Anyway						

„Shift“ tasks/entire role in proposal to another, non-oversubscribed funder?

OSF: EXAMPLE (MAX. OSF=3)

Ranked PP	Funder 1 15 M€	OSF	Funder 2 10 M€	OSF	Funder 3 5 M€	OSF
Superfarm	9	0,6	5	0,5	3	0,6
WonderAGRI	9	1,2	5	1,0	1	0,8
FERTIL	6	1,6	2	1,2	2	1,2
BoostAg	10	2,27	2	1,4	2	1,6
AgMagna	15	3,26	2 M€	1,6	2 M€	2,0
VolvBay	1	2,33	8	2,2	5	2,6
BIEN	5	2,66	5	2,7	5	3,6
AVENGe						
CafeClim						
Anyway						

OSF: EXAMPLE (MAX. OSF=3)

Ranked PP	Funder 1 15 M€	OSF	Funder 2 10 M€	OSF	Funder 3 5 M€	OSF
Superfarm	9	0,6	5	0,5	3	0,6
WonderAGRI	9	1,2	5	1,0	1	0,8
FERTIL	6	1,6	2	1,2	2	1,2
BoostAg	10	2,27	2	1,4	2	1,6
AgMagna	15	3,26	2		2	
VolvBay	1	2,33	8	2,2	5	2,6
BIEN	5		5		5	3,6
AVENGe	5	2,67	5	2,7	2	3,0
CafeClim	2		2		1	3,2
Anyway						

OSF: EXAMPLE (MAX. OSF=3)

Ranked PP	Funder 1	OSF	Funder 2	OSF	Funder 3	OSF
Superfarm	9 M€	0,6	5 M€	0,5	3 M€	0,6
WonderAGRI	9 M€	1,2	5 M€	1,0	1 M€	0,8
FERTIL	6 M€	1,6	2 M€	1,2	2 M€	1,2
BoostAg	10 M€	2,27	2 M€	1,4	2 M€	1,6
AgMagna	15 M€	3,26	2 M€		2 M€	
VolvBay	1 M€	2,33	8 M€	2,2	5 M€	2,6
BIEN	5 M€		5 M€		5 M€	3,6
AVENGe	5 M€	2,67	5 M€	2,7	2 M€	3,0
CafeGlim	2 M€		2 M€		4 M€	3,2
Anyway	3 M€	2,87	3 M€	3,0	0 M€	3,0

UNDERSUBSCRIPTION FACTOR: WHY?

- › Typically when requested funding (also end of step 1) from all applicants for a funder / Initial budget of this funder < 1
- › Why?
 - › An undersubscribed funder will not be able to spend its entire budget, resulting in less funding than originally available
 - › Risk higher that this funder does not get any project (cannot be excluded even for OS-funder)
 - › Risk to „lose“ this funder for future calls

UNDERSUBSCRIPTION FACTOR: HOW?

- › Shift tasks (and budget) from funder with OSF above the threshold to funder with USF
- › Another funder from same country could „give“ one project to this funder?
- › Allow for including partner(s) from this country into consortia invited to submit full proposals, though careful!
 - › Must ensure eligibility of this new partner
 - › Who initiates this inclusion: coordinator? new partner? Funder?
 - › Monitor! Funder should not fall into high OSF problem (what OSF then?)
 - › Do not give the impression that this project will be selected in any case (coordinator could complain that „we have changed his project“)

FEW CLOSING REMARKS

- › Find the good balance:
 - › High OSF -> risk that a funder blocks the ranking list early + usual rule of 1 funder not getting more than ist own budget on top from the EC
 - › Low OSF -> risk to lose good projects at 1. step & USF of other
 - › Typically $2 < OSF < 3$
- › USF to be used with caution
- › Communication to applicants might be tricky
- › Try to be flexible while keeping in mind the risks!
 - › Set first a rather low OSF (2,5?), eventually (only if needed, e.g. too many funders with USF) go a little bit higher (if you notice 2,6 would make a big difference)



THANK YOU!

Picture credits front page:
3D Assembly: Project Management Jülich, Forschungszentrum Jülich GmbH;
Pictures: IvanMikhaylov/iStock/Thinkstock, palau83/iStock/Thinkstock, PN_Photo/iStock/Thinkstock